

RANGE HIGH SCHOOL

CHALLENGE • SUPPORT • FLOURISH





RANGE HIGH SCHOOL

Stapleton Road, Formby, Liverpool L37 2YN

Telephone: 01704 879315

Email: admin@range.sefton.sch.uk

Headteacher: Mr M McGarry MA, PGCE, NPQH

Dear Students and Parents/Carers,

November 2024

Welcome to the next, very exciting stage in your educational journey! I would like you to consider very carefully the next two years of your life as it will go by very quickly. I'm quite sure that all of the adults reading this will agree with me! Sixth Form education marks a new start, a fresh beginning for all of you.

Most of you will know Range very well and will be aware of the excellent standards its students achieve. Many of you will have contributed to the school's successes over the last five years and will have decided that Range is the first and best choice for further study.

Range offers students the chance to excel through its educational programme, pastoral support and enrichment opportunities. Students routinely achieve 100% 'A' Level and BTEC pass rate and this year once again saw record results with the majority of our cohort going on to their first choice destinations. In 2024 our average A level grade was a grade B and for vocational courses it was a Distinction* Further details relating to our results are available on the DFE performance table website.

The sixth form offer includes not only traditional 'A' Level qualifications but also an increasing variety of vocational qualifications. To guarantee you an automatic place on each pathway, subjects operate a minimum grade requirement which we will be happy to discuss with you.

Range offers opportunities for you to develop as a young person, both in school and in the community. There are many reasons why we feel that Range should be your choice. Some of those reasons are outlined below:

- high academic and vocational standards including provision for students with additional needs;
- access to dedicated facilities in our purpose built Sixth Form Centre;
- personal and individual attention and assistance regarding choice of courses, progress throughout and
- progression onto employment and further and higher education;
- outstanding pastoral care;
- group sizes which allow for flexible teaching and learning;
- a varied enrichment programme;
- a dedicated team of specialist teachers and support staff who will have your very best interests at the very centre of what they do.

Extensive information about pathways and courses, and our online application form can be found on our website at www.range.sefton.sch.uk.

We take pride in the success of our students and hope that you will become part of that success at this fantastic sixth form. Good luck in making the very best decisions about your future, we look forward to supporting you in this journey. If you have any particular questions, do ask your teachers or get in touch with the Sixth Form Team (sixthform@range.sefton.sch.uk)

Yours sincerely,

Mr McGarry
Headteacher

WELCOME TO RANGE SIXTH FORM 2024

Range Sixth Form offers opportunity and possibility to its current and prospective students, through a varied curriculum at level 3, including 'A' level, Cambridge Technical and BTEC courses, as well as an array of extra-curricular and enrichment activities.

We know our students well and pride ourselves on our ability to treat each one as an individual. If you choose Range Sixth Form, we will work with you to enable you to develop your academic potential, as well as your extra-curricular interests.

Range Sixth Form has a track record of academic success, offering a diverse approach to teaching and learning, provided by specialist staff. As a student in the Sixth Form, we will help you to develop independent study skills beyond the classroom to support your learning.

You will be taught in small classes averaging about 15 students. We will support you with specialised Oxbridge preparation and provide extensive assistance with university, apprenticeship and employment applications. Range offers students the chance to excel through its educational programme, pastoral support and enrichment opportunities. This year the average A level grade was a grade B and for vocational courses the average grade was Distinction*. Students routinely achieve 100% 'A' level and BTEC pass rate. Further details in relation to A Level and vocational grades are available on the DFE performance table website. In 2024 students progressed onto a range of degree courses including: University of Leeds

Dental Surgery / Oral Science/ English Language and Literature

University of Sheffield - History and Politics

University of Liverpool – Geography/ Mathematics/ Engineering Foundation

University of Salford - Film Production

University of Bath - Civil Engineering

Liverpool Hope University - Primary Education with QTS (5-11)

Goldsmiths, University of London - Media and Communications

Edge Hill University - Sport & Exercise Science/ Computer Science/ Nursing Associate

Leeds Beckett University – Acting/ Business Economics/ Sports & Exercise Therapy

University of the Arts London - Fashion Journalism and Content Creation

They also secured apprenticeships and employment including a degree apprenticeship programme in Quantity Surveying with Galliford Try

Range Sixth Form has a history of outstanding, personalised and pastoral support. If you join our Sixth Form community, we will ensure that you have access to tutorials, study support sessions and are treated as individual learners. We will provide an enrichment programme including: Extended Project, Level 3 Core Maths, Duke of Edinburgh Award Scheme up to Gold Award, sporting fixtures, work experience, as well as subject based trips, visits and conferences.

We are proud of our students past and present. It is a privilege to experience on a daily basis their successes, achievements and contributions to the wider community. If you choose to join us, you do so at an exciting time, as we have enhanced our curriculum offer as well as our facilities. We look forward to welcoming you into our Sixth Form and to supporting you to achieve your ambitions as well as the future you deserve.


Sixth Form Team

Mrs Phillips

Mr McKay

Miss Ball

RANGE SIXTH FORM PATHWAYS

The school offers two main pathways to provide students with the maximum opportunity for success. Applications should be made via the Range High School website www.range.sefton.sch.uk (sixth form\apply now) via  our online application system

Pathway 1 (A Level Courses)

Art	Further Mathematics	Physics
Biology	Geography	Politics *NEW*
Business Studies	History	Product Design
Chemistry	Mathematics	Psychology
Computer Science	Media Studies	Spanish
Economics	Photography	Theatre Studies
English Literature	Physical Education	

Automatic consideration for **Pathway 1** will be given to students who achieve a minimum of **5 GCSEs 9-4 including Grade 4 in English Language and Maths**, and who meet the individual subject requirements. Students who do not meet the above requirements will be considered on an individual basis.

The vast majority of students will choose 3 courses for A Level study. Many will also study for an extended project qualification (EPQ) or the Level 3 Core Maths qualification. Both of these additional qualifications are equivalent to ½ A Level. Where students want to study 4 A levels, this will be discussed on an individual basis.

Pathway 2 (Vocationally related courses)

A number of vocational courses are available. The BTEC National Diploma is a two-year course, equivalent to **two** A levels and the BTEC Extended Certificate/Cambridge Technical Extended Certificate is equivalent to **one** A level. The level three vocational qualifications allow students the opportunity to study in a different way to A level. They are accepted as entrance to many university courses.

2 A level equivalent

BTEC Business Studies National Diploma

1 A level equivalent

BTEC Business Studies Extended Certificate

BTEC Digital Content Production Extended Certificate

BTEC Music Production Performance Extended Certificate OR BTEC Digital Music Production Extended Certificate (*Only one of the music courses will run*)

Cambridge Technical Sport & Physical Activity Extended Certificate

Applied Diploma in Criminology

AAQ Health and Social Care

Automatic consideration for **Pathway 2** will be given to students who have a minimum of **5 GCSEs 9-4 including Grade 4 in English Language**. However, students who do not meet the above requirements will be considered on an individual basis.

Pathway 3 (A levels and Vocational Courses)

Some students will want to study a combination of A level courses and vocational courses. This is possible and will be discussed on an individual basis

Please note that classes will only run if there is a viable group size.

RANGE SIXTH FORM - EXTRA CURRICULAR AND ENRICHMENT PROGRAMME

MATHS & FURTHER MATHS

- Number Buddies Scheme
- UKMT Senior Maths Challenge
- University of Southampton Cipher Challenge
- Ritangle Competition
- STEP Courses promoted



MEDIA STUDIES

- I, Daniel Blake theatre visit
- Disneyland Paris Trip
- Liverpool John Moores visit
- Edge Hill University Trip



GEOGRAPHY

- Iceland overseas Trip
- Edge Hill Educational visit
- Outside speakers



PSYCHOLOGY

- Key Speakers
- I'm a Psychologist
- Brain Day
- Charity group
- New York



BUSINESS STUDIES

- New York Trip
- Alton Towers Trip
- Bank of England talk
- Trading Day
- Business Live!
- DisneyLand Paris
- Jaguar Landrover



HISTORY

- Lessons from Auschwitz programme
- Poland Trip
- Berlin Trip



ART & PHOTOGRAPHY

- London at Christmas 2 nights
- European 3 night Trip
- Liverpool Galleries



COMPUTER SCIENCE

- Alton Towers Trip
- Digital Leaders Programme, Cyber Challenge
- New York Trip
- Business Live!
- DisneyLand Paris



SCIENCE

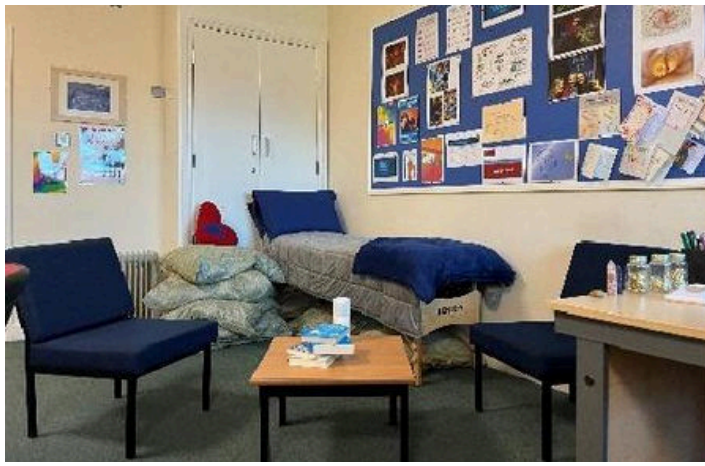
- Liverpool University NMR day
- Chemistry Olympiad
- Science-related work experience opportunities
- Science Buddy Scheme
- Trip to CERN / Geneva



FRENCH

- Y12 Trip to Nice
- A Level Study Day at Lancaster University
- A Level Study Day - Liverpool University
- Online A Level workshop (La Haine)





Range Sixth Form: Well-Being Practitioner

Introducing Lynn Gaskell, our sixth-form well-being practitioner. She has worked at Range High School since 2002 and now works exclusively with our sixth form students throughout years 12 and 13.

Lynn has a degree in children and young people's learning, support, and development and is a qualified learning mentor. She is also a fully qualified clinical solution-focused hypnotherapist and psychotherapist, having a Diploma in Solution Focused Hypnotherapy (DSFH), a Hypnotherapy in Practice Diploma (HPD), and a Diploma in Medical Hypnotherapy. Lynn is a qualified Reiki Master/Teacher, and also runs her own successful hypnotherapy practice alongside her work in our sixth form.

Lynn is a member of the National Board for Modern Psychotherapy (NBMP), the Association for Solution-Focused Hypnotherapy (AfSFH), the Complementary and Natural Health Care Council (CNCH), and the National Council for Hypnotherapy (NCH). This means that Lynn adheres to regularly updating her skills and knowledge and is committed to working to the highest standards. Lynn prides herself on continuing to develop her knowledge and skills to enhance the support that she is able to offer.

Working positively with our students without the need to relive the past or focus on the problem, solution focused hypnotherapy is a brain-based approach to therapy. This combines the most relevant and up-to-date research in neuroscience and utilises a solution-focused approach to solving current problems. Hypnotherapy is a safe and effective way of harnessing our brain's natural power to achieve change and find the 'best version of you' that there is. It is an evidence-based practice, and Lynn has many years of evidence to highlight the benefits of working with her. Of course, if hypnotherapy isn't your thing, Lynn can still work successfully with you in a solution-focused way to help you achieve your goals.

Currently Lynn offers all of our students a daily 'drop-in' service for advice or guidance, as well as a programme of one-on-one sessions. Students can refer themselves by emailing Lynn to arrange an appointment.

Lynn can also offer group workshops, such as 'getting a better night's sleep', 'finding the best version of you', and 'dealing with exam stress'. These hypnotherapy sessions will aim to equip students with the knowledge and skills to be calm, confident, and in control. Lynn can also facilitate breathing and meditation/mindfulness classes for interested students.

Lynn welcomes any ideas for future support that she could offer, which will enhance how we support our sixth-form students. She believes passionately about what she does and is always keen to listen or to share her passion and knowledge. If you are a year 11 student or a parent or carer of a student in year 11 and would like to know more or make any suggestions, you can reach Lynn via email at lg@range.sefton.sch.uk or by phone at 01704 879315 extension number 260.

A Level Maths



Why choose Maths at Range Sixth Form?

Maths is a highly regarded and enjoyable A Level. The problem-solving nature of A Level Maths provides a rigorous academic basis which makes it a sought-after qualification for many university courses and careers. We can offer:

- A committed, experienced, well qualified and supportive staff.
- An excellent A Level pass rate.
- There are enrichment opportunities, including the UKMT Senior Maths Challenge, the University of Southampton Cipher Challenge, the Ritangle Competition, and the Number Buddies program.

What will I learn?

Pure Maths

- Proof
- Algebra and Functions
- Coordinate Geometry
- Sequences and Series
- Trigonometry
- Exponentials and Logarithms
- Differentiation
- Integration
- Numerical Methods
- Vectors

Mechanics

- Quantities and Units in Mechanics
- Kinematics
- Forces and Newton's Laws
- Moments

Statistics

- Statistical Sampling
- Data Presentation and Interpretation
- Statistical Distributions
- Statistical Hypothesis Testing

What are the Entry Requirements?

- Grade 7 or above in GCSE Mathematics.
- Students who achieve a high Grade 6 may be considered on an individual basis in extenuating circumstances.
- Competence and confidence in using algebra is essential.
- Determination and commitment to completing all set work

After Range Sixth Form, what can I do?

As well as being a subject which can be studied in its own right, Maths is a key component of many jobs and degree courses. Good mathematicians are in demand and command high salaries and are required to work in a wide variety of companies. There is a wide career choice for students with high level mathematical skills.

Destinations of past students include:

- Architecture – Liverpool University
- Chemical Engineering - Leeds, Sheffield and Newcastle Universities
- Computer Science - Lancaster, Bath, Liverpool and Bristol Universities
- Dentistry - Sheffield University
- Mathematics - Cambridge, Edinburgh, Warwick, Leeds and Manchester Universities
- Mechanical Engineering - Liverpool, Leeds and Newcastle Universities
- Medicine - Imperial College London
- Veterinary Medicine and Surgery - Harper and Keele Veterinary School
- Merchant Navy



A Level Further Maths



Why choose Further Maths at Range Sixth Form?

If you are good at Maths, enjoy studying the subject and want to study it in more depth, then you should consider Further Maths. If you are considering studying a Maths related degree, Further Maths can be invaluable. Former students tell us that it has helped them enormously in degree courses such as Maths, Physics, Computing and Engineering. We can offer you:

- A committed, experienced, well qualified and supportive staff.
- An exceptional pass rate over many years.

What will I learn?

Pure Maths

- Proof
- Complex Numbers
- Matrices
- Further Algebra and Functions
- Further Calculus
- Further Vectors
- Polar Coordinates
- Hyperbolic Functions
- Differential Equations
- Numerical Methods

Mechanics

- Dimensional analysis
- Momentum and collisions
- Work, energy and power
- Circular motion
- Centres of mass and moments

Discrete Mathematics

- Graphs
- Networks and Network Flows
- Linear Programming
- Critical Path Analysis
- Game theory for zero-sum games
- Binary operations

What are the Entry Requirements?

- Grade 8 or above in GCSE Mathematics. Can only be taken alongside Maths A Level.
- Love of the subject and a desire and ability to work at a fast pace.
- Competence and confidence in using algebra is essential.

After Range Sixth Form, what can I do?

Studying Further Maths at A level is excellent preparation for University, particularly for those students wishing to study mathematics-related subjects such as Engineering, Science, Computing, Technology and Mathematics itself. Some leading universities now specify Further Maths as an entry requirement for certain courses.

Destinations of past students include:

- Mathematics - Cambridge, Manchester, Edinburgh, Nottingham, Newcastle, York and Liverpool Universities
- Chemistry - Oxford University
- Physics - Oxford and Manchester Universities
- Applied Mathematics - Aberystwyth University
- Veterinary Science - Liverpool University
- Engineering (Civil and Structural; Electrical; Mechanical; Aerospace) - Manchester and Sheffield Universities



A Level English Literature



Why choose English Literature at Range Sixth Form?

English is the most adaptable of subjects; whatever you are planning to study at university, whatever career you intend to follow, A level English will help. It is a subject that enhances your ability to communicate with others and, perhaps more importantly, to understand them. Through studying a wide range of exciting texts, in a vibrant learning community, you will have the opportunity to become an analytical writer, a skilled orator and an independent thinker.

What will I learn?

The AQA English Literature Specification B offers a comprehensive exploration of the literary genres of Tragedy and Crime. You will study a wide range of texts from across the literary canon, including poetry, drama and prose, ranging from Shakespeare to novels and plays published in recent years. You will be taught to explore texts from a critical perspective, applying a variety of different critical approaches.

What are the Entry Requirements?

Criteria for Range Sixth Form (Pathway 1)

- Grade 6 or above in GCSE English Literature and / or GCSE Language.

After Range Sixth Form, what can I do?

Anything and everything; the sky's the limit! This qualification is well-recognised and respected by university admissions tutors. It can lead to further studies in a wide range of academic areas. The critical, evaluative and organisational skills that English literature demands transfer well to other subject areas and allow applicants to degree courses to present themselves as informed, engaged and perceptive individuals.

English graduates find that their degrees open up a wide range of careers (for example in the media, law, teaching or journalism) or opportunities for continued study on post-degree courses.

Former students secured places on degree courses ranging from English Literature to Television and Radio, from Modern Languages to Law, and from Early Years Teaching to Creative Writing. They typically go on to study subjects as diverse as Philosophy, Media, Geography - and even Diagnostic Radiography! Many Range High School English students have achieved excellent degrees from prestigious universities, which have led to further academic studies or enhanced prospects in today's increasingly competitive job market.



A Level Media Studies



Why choose Media Studies at Range?

A supportive, caring and purposeful learning environment.

Experienced, specialist teachers to deliver each component of the A-Level Specification.

Outside visits to the media industry such as the BBC at Media City in Salford, LJMU, Edge Hill University, cinema and theatre visits and many more.

What will I learn?

You will make connections between different media forms and products, between media products and their contexts, both historical and political, and between theory and practical work.

You will engage with a range of rich and stimulating media forms and products from a range of historical, political and geographical backgrounds, identifying their significance to their audiences and their place in society.

What are the Entry Requirements?

- Grade 5 in Media Studies GCSE if taken (not compulsory)
- Grade 5 in English Language and Literature

After Range Sixth Form, what can I do?

Media Studies is a popular and growing area of Higher Education. There is a wide and varied range of media courses available at colleges and universities beyond Sixth Form. These include Film Studies, Journalism, Film and TV Production, Web Design, Graphic Design, Video Game Design, and much, much more! With the introduction of a study into the political and social setting of texts, the course will begin to explore core principles of Politics and Sociology degrees. Media Studies will also equip you with transferable skills such as inference, historical and political analysis, communication and independence. Key critical thinking skills will also be learnt, which will help with problem solving in all areas of study.

Some of our former students are now working in the media, in areas such TV and Film Production and Journalism. In addition to this, our students have gone on to study most subjects you can think of! These include English Language and Literature, History, Law, Fashion Design and Marketing, Fine Art, Graphic Design, Business Studies, Law and Politics, Primary and Secondary Education, and Modern Foreign Languages.

Former student Amy Jackson (Production Assistant) Media Communications (BA Hons) London College of Communications

Amy has been a producer and presenter for Liverpool Live! Radio and is now working with SISTER Productions on a range of shows including Passenger for ITV and Eric, Kaos and Good Grief for Netflix. Amy took Media Studies here at Range achieving an A. Amy regularly gets in touch to tell us all about her adventures and how her studies here at Range have helped her in her work life.

Former student Jack McKnight (Director) Salford University TV and Radio Production (BA Hons) TV Drama Production (MA)

Since leaving Range High Jack has gone on to work as a director for both his own company and others creating short fiction as a way to enter into the Media industry. Jack came to Range High Sixth Form to study Media and achieved the best grade possible in the old BTEC qualification.



A Level Biology



Why choose Biology at Range Sixth Form?

A Level Biology at Range will give you an exciting insight into the contemporary world of Biology. It covers the key concepts of Biology and practical skills are integrated throughout the course. The Biology course is delivered by experienced, specialist Biology teachers who are committed to their students' success.

What will I learn?

You will learn about the core concepts of Biology and the impact of biological research and how it links to everyday life. You will learn to apply your knowledge and to investigate and solve problems in a range of contexts. Areas of biology covered by the course include cell structure, enzymes, exchange surfaces, transport in plants and animals, cloning and biotechnology, ecosystems, populations and sustainability.

You will become competent in:

- Following procedures
- Applying an investigative approach when using instruments and equipment
- Making and recording observations
- Researching, referencing and reporting

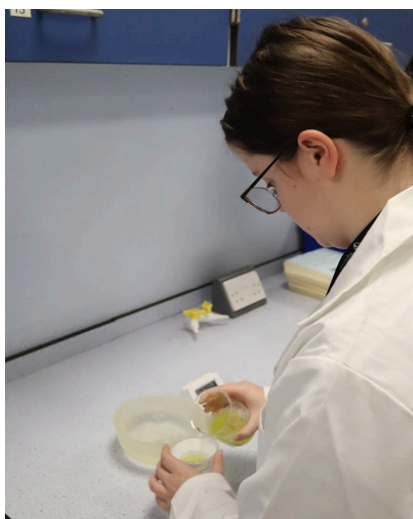
What are the Entry Requirements?

- Grade 6 in GCSE Biology or Grade 6 in GCSE Combined Science.
- Grade 6 or above in Maths GCSE

After Range Sixth Form, what can I do?

A Level Biology at Range is an excellent base for a university degree in healthcare, such as Medicine, Veterinary Medicine or Dentistry, as well as Biological Sciences, such as Biochemistry, Molecular Biology or Forensic Science. Biology can also complement Sports Science, Psychology, Sociology and many more subject areas. The transferable skills you will gain, such as problem solving, are also useful for many other areas such as Law.

Previous students of Biology have gone on to study a wide range of subjects at degree level including Biology, Biochemistry, Chemical Engineering, Civil Engineering, Environmental geography, Genetics, Marine Biology, Medical Microbiology and Radiography.



A Level Chemistry



Why choose Chemistry at Range Sixth Form?

Chemistry at Range is taught by highly qualified staff who are committed to their students' success. The pass rate for A level Chemistry is consistently 100%.

We have links with local universities, activities such as the Young Analyst Competition, and students have the opportunity to enter the Chemistry Olympiad organised by the Royal Society of Chemistry.

What will I learn?

By studying Chemistry at Range you will develop knowledge of the three major branches of Chemistry (physical, inorganic and organic) in a logical sequence of topics, progressing from GCSE through to A level.

Physical Chemistry attempts to discover the general patterns in the behaviour of matter, summarise the patterns in the form of laws and then tries to explain them by means of theories.

Organic Chemistry is the study of carbon compounds, which are used to make a vast range of useful products including polymers, pharmaceuticals and fuels.

Inorganic Chemistry is the study of the remaining metallic and non-metallic elements.

What are the Entry Requirements?

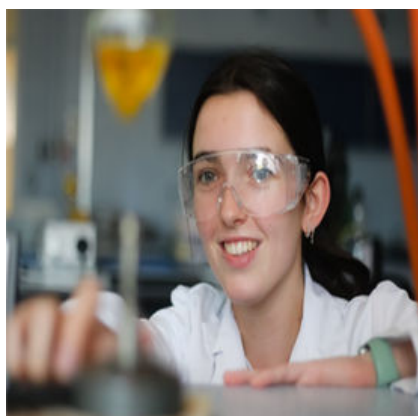
- Grade 6 in Chemistry GCSE or Grade 6 in Combined Science GCSE
- Grade 6 or above in Maths GCSE.

After Range Sixth Form, what can I do?

The study of A Level Chemistry is an excellent choice for people who want a wide range of career opportunities. It is essential for entry onto degree courses such as medicine, dentistry, pharmacy, biochemistry and chemistry itself. Also, the skills developed during the course are recognised as being useful in careers such as accountancy, banking and law.

From research in space to the depths of the world's oceans, chemists are involved in almost every area of life.

Previous students of Chemistry have gone on to study a wide range of degrees at university, including Chemistry, Medicine, Dentistry, Chemical Engineering, Pharmacy, Geology, Zoology, Engineering, Biological Sciences, Biochemistry, Physiotherapy, Veterinary Science, Maths, Computer Science and Law.



A Level Physics



Why choose Physics at Range Sixth Form?

Physics at Range is delivered by highly experienced and enthusiastic specialist staff who are committed to helping students reach their full potential. You will be encouraged and supported by your teachers through a course which promotes increased independence and academic rigour.

A range of extracurricular opportunities is available to Physics students:

- Visits to lectures /workshops at local universities
- Y12 and Y13 students have also had the opportunity to visit the Cern Particle Physics Research Faculty in Geneva.

What will I learn?

The course aims to develop your understanding of the world around you, from the smallest building blocks of matter and light to the Universe and everything in between!

You will develop analytical, quantitative and problem solving skills through engaging, interactive and practical lessons.

Year 12: mechanics, energy, waves, electricity, particle and quantum physics.

Year 13: compulsory topics of fields, electromagnetism, nuclear physics, harmonic motion and thermal physics. There is also a choice of one optional unit including astrophysics, medical physics or turning points in physics.

Throughout the course there is a very strong emphasis on extended practical work using a range of technologies. This is an essential part of the course with 5 common practical assessment criteria (CPAC's) built into each section.

What are the Entry Requirements?

- Grade 6 in Physics GCSE or Grade 6 in Combined Science GCSE
- Grade 6 or above in Maths GCSE

In addition to these students who do well at A-level Physics are:

- Positive and enthusiastic about Science
- Have the ability to study independently and know when to seek help when required
- Have excellent personal organisational and time-keeping skills
- Have a strong mathematical ability, so the study of 'A' Level Maths is recommended
- Have lots of resilience—you will make lots of mistakes

After Range Sixth Form, what can I do?

If you want to be an engineer, weather forecaster, games designer, sound engineer, journalist, renewable energy advisor, investment banker, surgeon, physiotherapist, Physics is for you too!

By studying Physics you are opening the door to a wide variety of careers. As well as learning about how the universe works, you will get a broad training in skills that all employers value – an ability to grasp concepts quickly, a determination to find coherent answers, not to mention problem-solving, analytical, mathematical and IT skills. Studying Physics is an excellent way of keeping your options open and allowing entry into a vast number of further education courses, as well as providing plenty of employment opportunities.



A Level Geography



Why choose Geography at Range Sixth Form?

Studying A Level Geography equips you with essential skills to understand global issues, analyse complex data, and appreciate the interconnections of human and environmental systems, making it a valuable choice for a wide range of careers.

What will I learn?

The Edexcel A Level Geography course offers a comprehensive exploration of both physical and human geography. Students study topics such as global systems, landscapes, and environmental challenges, alongside human interactions with places and populations. The curriculum emphasises critical thinking, data analysis and fieldwork, encouraging students to apply their knowledge to real-world issues.

What are the Entry Requirements?

- Grade 6 in Geography
- Grade 6 in English Language

After Range Sixth Form, what can I do?

Many of our former students have gone on to careers that have been heavily influenced by their choice to study Geography A level. Jobs of former students include: shoreline management co-coordinator, geo-technical engineer, project geologist, reservoir engineer, sustainability analyst, teacher, oceanographer and planning officer.

Former student Rose Dawson

"I chose to take A level Geography not only because it was good fun, but because it is a subject that covers many interesting topics and is fundamental to understanding the world around you. Studying geography gave me lots of key skills that helped me gain confidence throughout school and assisted me in other subjects too."

Geography is such a broad subject, so there is something for everyone to enjoy within the curriculum. Studying Geography at Range and being taught by amazing teachers made me recognise what I was interested in and gave me future aspirations. I am now studying Geography at university and looking forward to the opportunities that lie ahead."



A Level History



Why choose History at Range Sixth Form?

- Experienced, enthusiastic and committed teachers
- Excellent examination results
- Study visits to enrich the curriculum.
- The chance to devise, research and complete a coursework question on a topic of your choice.

What will I learn?

Different aspects of 16th - 18th and 20th century History.

Unit 1: Twentieth century British political history

Unit 2: Democracy and Dictatorships in Germany 1919-1963

Unit 3: The Witch Craze in Britain, Europe and North America

Unit 4: Coursework

What are the Entry Requirements?

Grade 6 at GCSE in History

Grade 5 in English Language

A desire to find out about the past

Enthusiasm for communicating ideas.

After Range Sixth Form, what can I do?

University degrees such as History, Politics, International Relations, Sociology, and Law.

A variety of careers including law, journalism, politics, teaching, business and heritage.

Advance your career using the critical thinking and analytical skills you have developed through History.

What previous A level students at Range have said:

"History has really helped me to improve my analytical skills, which are extremely useful for applying to university and future career opportunities."

"History helps you develop a wide range of skills that will help you in the future. History repeats itself, and if we don't look at the past, we can't learn for the future."



A Level Politics



Why choose Politics at Range Sixth Form?

Politics will provide you with the following:

- An A level that is well-respected by employers and universities
- Academic skills that are transferable to life
- A conceptual (ideas) understanding to help you navigate a complicated world
- Exciting and varied lessons

What will I learn?

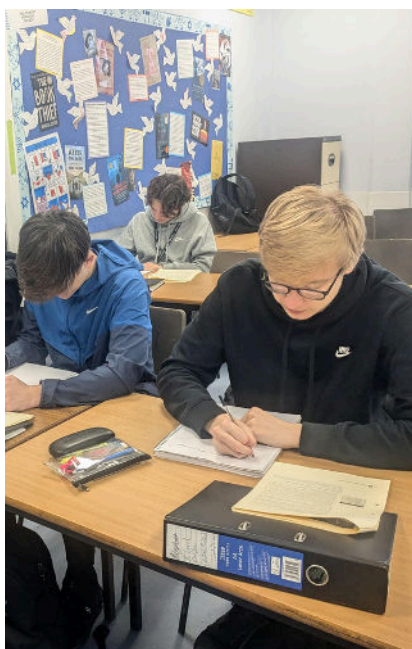
- Unit 1: UK Politics—Political parties and their ideas—conservatism, liberalism and socialism.
- Unit 2: UK Government—Who has power in the UK? The role of Parliament, the Prime Minister, the King and the judiciary/the legal system. Political philosophy—feminism, anarchism, environmentalism, multiculturalism and nationalism.
- Unit 3: US Politics—The President, the Supreme Court, Congress, Civil Rights, The ideas of the Republicans and Democrats and American elections, including the recent presidential election.

What are the Entry Requirements?

- Grade 6 in a writing subject like English, History or Geography
- A desire to challenge your own thinking
- A willingness to broaden your horizons
- Knowledge and passion for understanding

After Range Sixth Form, what can I do?

Politics can help you get into a good university, get a good job and simply prepare you for a complicated world. Some of the career paths it might lead to are politics, diplomacy, charities, pressure groups, law, journalism, the armed forces, editing, the civil service, teaching, office work, accountancy, business, the heritage industry, the service sector and the media.



A Level Product Design



Why choose Product Design at Range Sixth Form?

Product Design involves learning about the design, engineering and manufacture of a range of products made from a wide variety of materials.

Throughout the course you will take ownership of your project work and learning, which will help develop your skills to be an effective designer, engineer or manager.

What will I learn?

Develop and enhance your modelling, construction techniques, and CAD/CAM (Computer Aided Design/Computer Aided Manufacture) skills.

Take advantage of our facilities to work independently in and out of lesson time to design and make your own prototype product to match your career aims or interests.

Enhance your awareness of commercial designers and products that have become design classics.

Study the work of commercial and contemporary designers and the impact that manufactured products have on our world.

What are the Entry Requirements?

Range Sixth Form pathways 1 and 2.

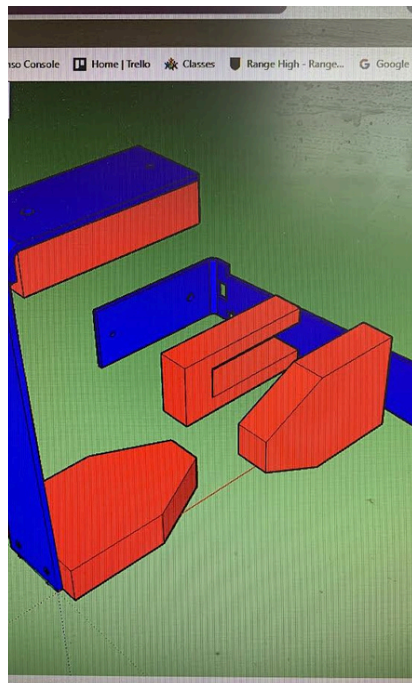
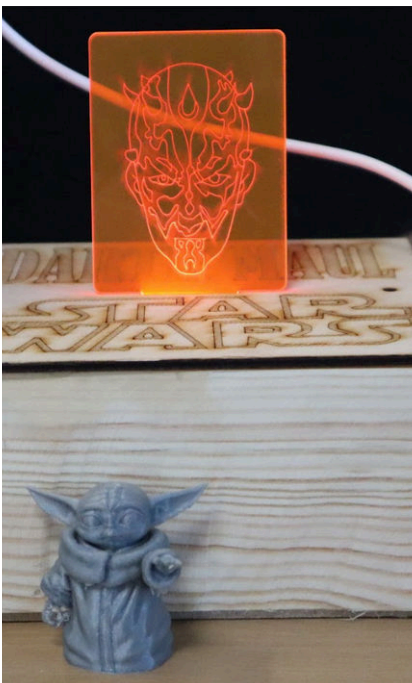
- Grade 6 in Design & Technology OR 6 in Art or Photography
- Please note that due to the practical nature of this subject, students will be considered on an individual basis even if they have not taken the subject at GCSE.

After Range Sixth Form, what can I do?

The study of Product Design can lead to Higher Education courses in Engineering, Civil Engineering, Architecture, Product Design and Graphic Design.

It also facilitates other careers and courses such as Art, Business, Management and Media.

Past students have gone on to study, or start apprenticeships in Engineering, Civil Engineering, Product Design, Art, Computer Animation and Teacher Training at a wide variety of universities including Brunel.



A Level French



Why choose French at Range Sixth Form?

The aim of the Languages Faculty is to encourage you to:

- Develop an interest in, and an enthusiasm for language learning.
- Develop an understanding of French in a variety of contexts and genres.
- Communicate confidently, clearly and effectively in French for a range of purposes.
- Develop awareness and understanding of the contemporary society, cultural background and heritage of Francophone countries or communities.
- Consider your study of French in a broader context.

What will I learn?

During the course you will have access to a wide range of authentic materials to improve and deepen your knowledge of French. The study of a variety of topics will encourage the development of all four language skills (listening, speaking, reading, writing) and will involve the use of websites, videoclips and a wealth of recorded material.

You will also have the opportunity to study one book and one film in French. In the past we have studied Albert Camus' 'L'étranger' and Mathieu Kassovitz's critically acclaimed film 'La Haine'

What are the Entry Requirements?

- Grade 6 at GCSE in French
- Grade 5 in English Language
- Students who don't meet the requirements will be considered on an individual basis

After Range Sixth Form, what can I do?

The study of French combines well with many other subjects and a qualification in languages can enhance future employment prospects and careers. Linguists are the second most employable graduate category after medics. Studying a foreign language can lead to work in international business, law, management, marketing, publishing, journalism, trade and commerce, travel and tourism, translating, media and teaching. Previous students have studied Civil Engineering, Acting, and Sports Injury with the option to study abroad, as well as Modern Foreign Language degrees.



A Level Art



Why choose Art at Range Sixth Form?

Choosing Art at A level lets students explore creativity and develop critical thinking skills. It encourages self-expression and personal interpretation while building a foundation in artistic techniques and art history. This subject enhances problem-solving abilities and visual literacy, valuable in many fields. Art also serves as a therapeutic outlet, promoting mental well-being during challenging academic years. Our program offers a supportive and collaborative environment where students are valued and encouraged to pursue their creative concepts.

What will I learn?

In Art A Level, students master various skills and concepts, including drawing, painting, printmaking, and digital media. They develop ideas from initial concepts to finished works while gaining an understanding of art history and its contextual influences. Students learn to critically analyse and interpret artworks, including their own, enhancing their visual literacy and ability to communicate ideas effectively. The program also encourages self-expression through personal themes and narratives, culminating in the creation of a comprehensive portfolio and final outcome.

What are the Entry Requirements?

- Grade 6 in GCSE Art is desirable; however students will be considered on an individual basis.

After Range Sixth Form, what can I do?

After completing an Art A Level, pupils pursue various paths: many enrol in university for degrees in Fine Art, Illustration, Graphic Design, or Architecture. Past students have gone on to explore careers in graphic design, fashion, art therapy, architecture and marketing.. Opportunities in education, such as teaching art, or working in galleries and arts organisations are also viable options. Other previous students have gone on to start their own creative business or been involved in community arts initiatives. Overall, an Art A Level offers a diverse range of creative and professional opportunities.



A Level Photography



Why choose Photography at Range Sixth Form?

Photography A Level offers students a unique opportunity to explore visual storytelling and develop technical skills in capturing images. Students learn about composition, lighting and editing, while also delving into art context and the theory of photography. This course fosters creativity and self-expression, allowing students to convey personal narratives and perspectives through their work. Additionally, Photography A Level enhances critical thinking and visual literacy and acts as an outlet for self-expression. Through their work, students can articulate their thoughts and emotions, promoting resilience and personal growth while refining their artistic abilities. Our Photography A level program fosters a supportive and collaborative atmosphere where students are appreciated and inspired to explore their creative ideas.

What will I learn?

Within Photography A Level, students master technical skills while also learning editing techniques using software such as Adobe Photoshop. Students explore themes such as portraiture and landscape within their personal investigation and gain an understanding of photography techniques and influential artists. The course emphasises visual communication and critical analysis, allowing students to evaluate their own work and that of others. Ultimately, students develop a cohesive portfolio, blending technical proficiency with creative expression to prepare for further education or careers in the visual arts.

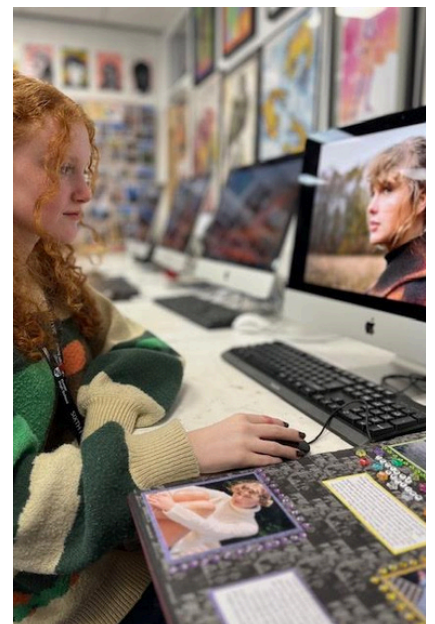
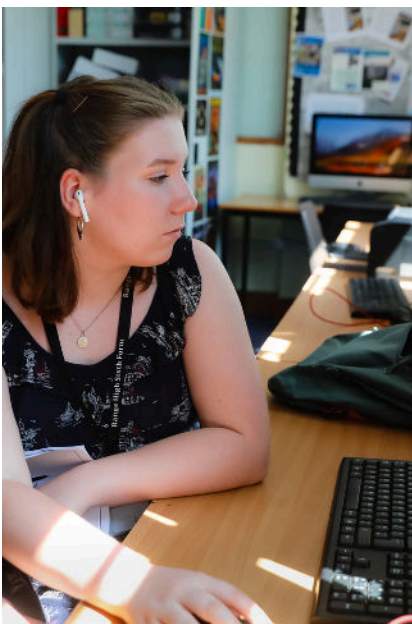
What are the Entry Requirements?

- Grade 6 in GCSE Photography is desirable; however, students will be considered on an individual basis.
- Students who have taken Art or Media at GCSE would be suitable candidates for the course.

If a student has not studied Photography before, they should provide a portfolio for staff to consider.

After Range Sixth Form, what can I do?

A Level Photography opens pathways into creative and visual careers, including professional photography in fields like fashion, commercial and nature photography, as well as photojournalism, film production, and graphic design. It's also valuable for roles in social media, digital marketing, and brand management, where strong visual content is essential. Additionally, careers in art direction, curating, teaching, forensic photography, and editing benefit from a photography background, making it a versatile skill set for storytelling, composition and technical image production across various industries.



Digital Music Production



Why choose Digital Musical Production BTEC at Range Sixth Form?

BTEC Digital Music Production is delivered by experienced, specialist teachers in a supportive and purposeful environment, using industry standard equipment. You will focus on Digital Composition, Audio Manipulation, Working to a Brief, and Professional Practice, all of which are essential skills for anyone wanting to work in the music industry.

Extra curricular activities include visits to music industry venues and recording studios, and workshops from external industry experts.

What will I learn?

Throughout the course, you will work to develop your musical and technical skills by exploring the features of Digital Audio Workstations (DAW), learning how to use synthesisers and samplers, creating and producing music for a variety of scenarios including games, film and apps, and gaining experience in mixing down and mastering multitrack DAW-based techniques. To support these skills, you will also develop your knowledge and understanding of the fundamental key terms and technical industry language, and how they can be applied in practical musical activities. You will develop and apply theoretical knowledge through physical experiments, investigating how sound can be created, changed, bent and manufactured into anything a creative musician could hope for.

Everyone taking this qualification will study the 2 mandatory units:

- Music and Sound for Media
- DAW Production (Externally Assessed)

In addition to the 2 mandatory units, all students will also need to study 3 of the optional units:

- Creative Synthesis and Sampling
- Remixing and Reworking
- Mixing and Mastering Techniques
- Commercial Music Production

What are the Entry Requirements?

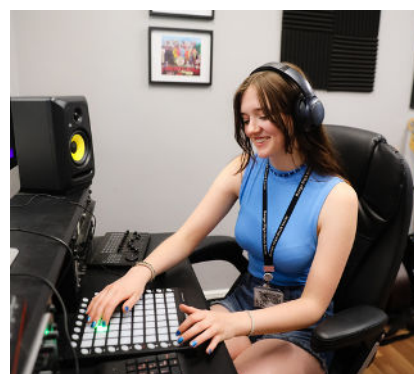
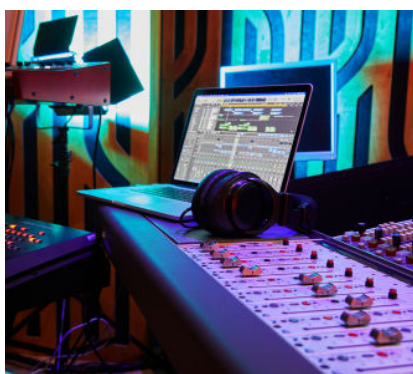
- A minimum of 5 GCSEs 9-4 including Grade 4 in English
- Good computer skills and experience of using DAW and other music software.
- Students who do not meet the minimum requirements will be considered on an individual basis.

After Range Sixth Form, what can I do?

Music can lead you into an exciting and creative career in the music and media industries. The skills that you will develop are essential for working as a music producer, remixer, sound designer or studio assistant.

There is a wide range of vocational and academic higher education courses available in this subject area, such as:

- BA (Hons) in Music Technology and Production
- BA (Hons) in Sound Arts and Design
- BA (Hons) in Digital Music and Sound Arts
- BSc (Hons) in Music and Sound Production Technology



BTEC Music Performance



Why choose BTEC Music Performance at Range Sixth Form?

BTEC Music Performance is delivered by experienced, specialist teachers in a supportive and purposeful environment, using industry standard equipment. You will focus on Performance, Composition, Musicianship, and Professional Practice, all of which are essential skills for anyone wanting to work in the music industry.

What will I learn?

Throughout the course, you will work as part of a musical group and will develop your ensemble skills by taking part in rehearsals. To support your performance skills, you will also develop your knowledge and understanding of fundamental musical theory and how it is applied in practical musical activities. In addition to this, you will also gain an understanding of what is meant by the term 'professional practice' as well as what it means to be a freelancer working in the music industry.

Everyone taking this qualification will study the 3 mandatory units:

- Practical Music Theory and Harmony
- Professional Practice in the Music Industry (Externally Assessed)
- Ensemble Music Performance (Externally Assessed)

In addition to the 3 mandatory units, all students will also need to study one of the optional units:

- Composing Music
- Music Performance Sessions Styles
- Solo Performance

What are the Entry Requirements?

- A minimum of 5 GCSEs 9-4, including Grade 4 in English
- The ability to play at least one instrument (including singing) to a satisfactory level.

However, students who do not meet the minimum requirements will be considered on an individual basis.

After Range Sixth Form, what can I do?

Music can lead you into an exciting and creative career in the music and media industries. The skills that you will develop are essential for working as a performer, composer, or producer in a recording studio, radio, theatre, and live music venues. There is a wide range of vocational and academic higher education courses available in this subject area.

- BA (Hons) Music
- BA (Hons) Music Performance
- BMus (Hons) Popular Music Performance



A Level Physical Education



Why choose PE at Range Sixth Form?

- A supportive, caring and motivational climate in which to learn
- Access to good facilities to allow students to undertake practical work
- Opportunities to be involved in helping to coach our lower school sports teams

What will I learn?

Our current specification teaches students to evaluate performance and suggest plans for improvement. It also covers the benefits of healthy living alongside topics like the role of media in sports.

We also have 121 progress checks with our students to ensure each student is on target and to see if they require any additional support.

What are the Entry Requirements?

- Grade 6 in PE
- Grade 5 in Biology or Combined Science
- Please note that due to the practical nature of this subject, students will be considered on an individual basis even if they have not taken the subject at GCSE.

After Range Sixth Form, what can I do?

Higher Education courses in Physical Education, Sport, Leisure, Nutrition and Health.
Careers in coaching, teaching, leisure management, journalism, sports science, physiotherapy, sports medicine, sports development, fitness instructing, sports design and technology.

Former student Annie Studying Sport and Exercise Therapy at Leeds Beckett

"I really enjoyed A-level PE because I felt encouraged by all the teachers who offered up their free time to help and support me outside of lesson times before my exams. All the PE teachers shared a good relationship which was reflected in our class and made lessons engaging and fun."

Former student Sarah
Sarah plays professional rugby union and is an England international.



Cambridge Technical Sport and Physical Activity



Why choose Cambridge Technical Sport and Physical Activity at Range Sixth Form?

- A supportive, caring and motivational climate in which to learn.
- Access to good facilities to allow students to undertake practical work in order to underpin theory.

What will I learn?

Physical Education qualifications allow students to play to their strengths and gain dynamic skills for further education and a healthy future. The course will provide learners with the opportunity, through applied learning, to develop the core specialist knowledge, skills and understanding required in the sport and physical activity sector.

Students are assessed via two external assessments and a number of coursework assignments. There is no practical assessment but some content is taught in a practical setting.

There are 3 mandatory units which students must complete:

- Body systems and the effects of physical activity (exam)
- Sports coaching and leadership (coursework)
- Sports organisation and development (exam)

In addition to the 3 mandatory units, we will also study the following optional units:

- Sports injuries and rehabilitation (coursework)
- Organisation of sports events (coursework).

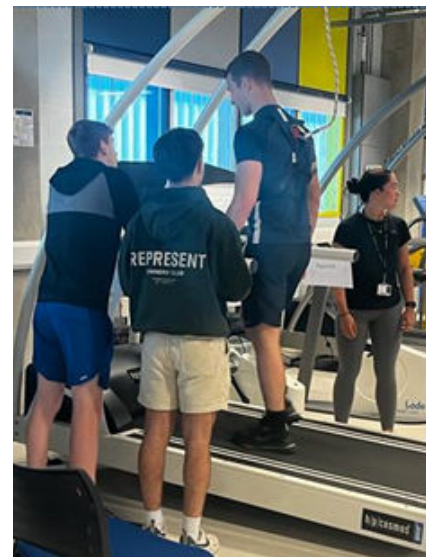
What are the Entry Requirements?

- A keen interest and a passion for sport and physical activity.
- A minimum of 5 GCSEs 9-4 including Grade 4 in English Language.

After Range Sixth Form, what can I do?

This course can lead to careers in:

- Sports coaching
- PE teaching
- Sports journalism
- Sports science



A Level Computer Science



Why choose Computer Science at Range Sixth Form?

Range Sixth Form's Computer Science department consistently achieves top results at A Level, ensuring you are pushed to reach your full potential.

With five dedicated computer suites equipped with modern software, and comprehensive online resources, we ensure you have the tools and support to succeed. Our department offers tailored support for challenging topics, helping all students thrive.

What will I learn?

We offer the OCR GCE Computer Science (H446), a rigorous course combining practical programming skills with theoretical understanding. You will develop essential skills like problem-solving, logical thinking, and efficient programming. The course includes a practical project for a real-world company, where you will analyse, design, develop, and evaluate a program.

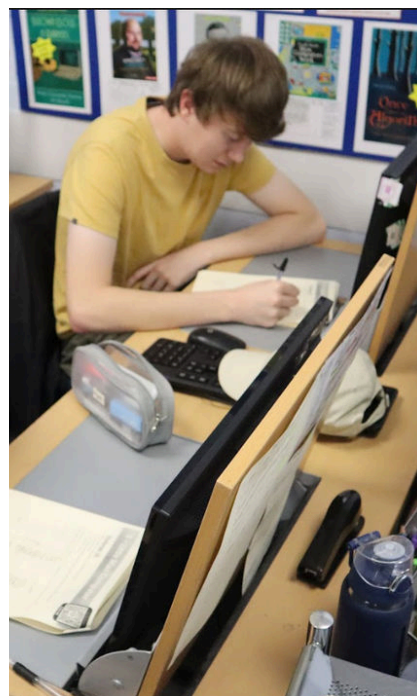
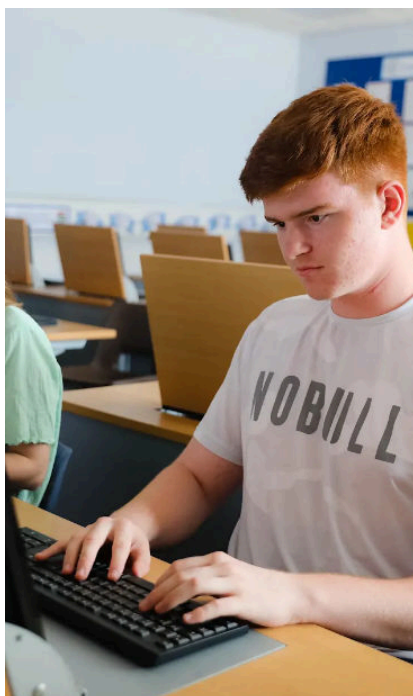
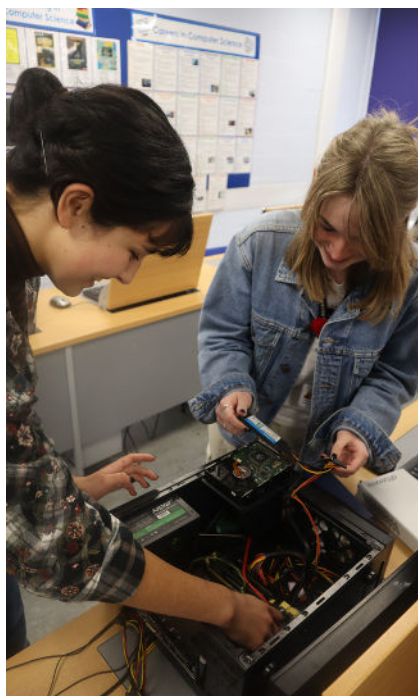
- Unit 1: Computer Systems (external exam - 40%): covers processors, software development, databases, networks, Boolean algebra, and more.
- Unit 2: Algorithms and Programming (external exam - 40%): focuses on programming techniques, algorithms, and computational methods.
- Unit 3: Programming Project (non-exam - 20%): a real-life programming project where you will develop a solution from start to finish.

What are the Entry Requirements?

- Grade 6 in GCSE Computer Science and Grade 6 in GCSE Mathematics
- OR Grade 7 in GCSE Mathematics (where Computer Science has not been studied at GCSE)

After Range Sixth Form, what can I do?

This course opens doors to careers and further studies in fields like software development, games programming, data science, robotic engineering, and cybersecurity. Many of our students go on to pursue degrees such as BSc (Hons) in Computing, Games Programming, and Information Technology.



BTEC Digital Content Production



Why choose Digital Content Production at Range Sixth Form?

Digital Content Production goes hand-in-hand with subjects like Photography, Media Studies, or Art. Our department achieved outstanding results last year, with 100% of students awarded Distinction-Distinction*, and 80% at Distinction*.

With access to the latest Adobe Creative Suite and dedicated computer suites, you will have everything you need to excel. Our department provides strong support, ensuring that you achieve your best while working with up-to-date resources available on the school VLE.

What will I learn?

This BTEC is a modern, hands-on course designed for students who want to build practical digital skills. You will create a range of digital products, including websites, digital graphics, and multimedia products, applying design principles and project management techniques.

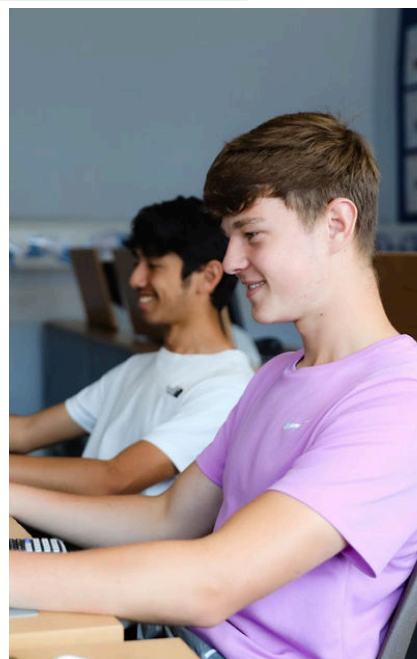
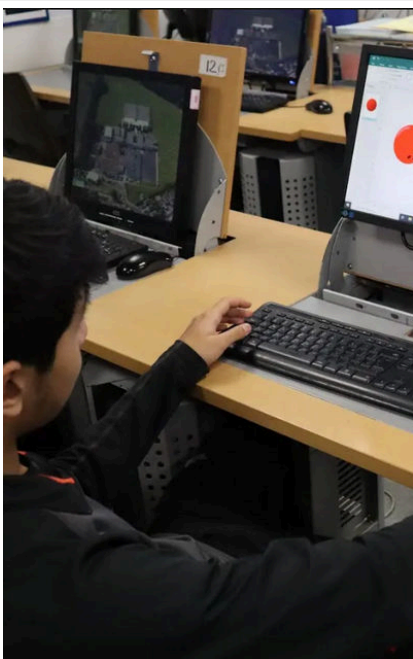
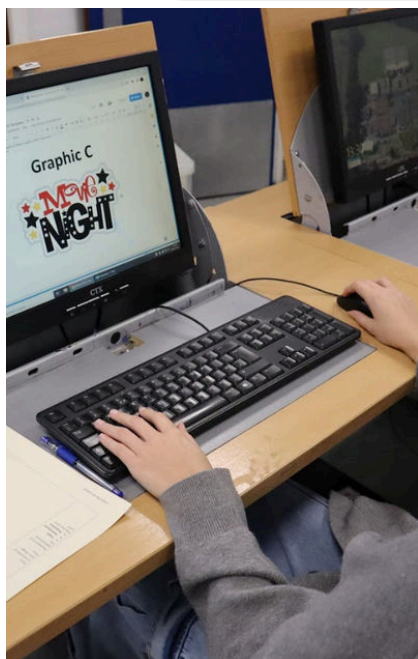
- Unit 3: Digital Skills (external exam - 33%): Develop a product using skills from video, sound, websites, or game design.
- Unit 12: Website Production (internal assignment - 16.75%): Design user-friendly websites with engaging multimedia content.
- Unit 14: Digital Magazine Production (internal assignment - 16.75%): Create print and digital magazine layouts with targeted audience appeal.
- Unit 29: 2D Digital Graphics (internal assignment - 16.75%): Design creative digital graphics for various media platforms.
- Unit 30: Page Layout for Digital Media (internal assignment - 16.75%): Explore digital and print page design for different formats.

What are the Entry Requirements?

- Grade 4 in English Language and 4 further GCSE Grades 9-4
- A keen interest in the subject or related subjects like Art, Media or Photography

After Range Sixth Form, what can I do?

This qualification prepares you for higher education courses such as graphic design, multimedia art or animation web design, digital illustration, games design, and interactive media. It also provides skills for roles like junior content producer, web coordinator, or digital assistant. Whether pursuing a degree or entering the creative industry, this BTEC will give you a strong foundation.



A Level Business Studies



Why choose Business Studies at Range Sixth Form?

Business Studies offers you an invaluable insight into the wide world of work, from the point of view of a number of stakeholders such as entrepreneurs, managers and workers. You will be able to investigate real-life businesses and analyse the many reasons for their success or failure.

What will I learn?

You will be part of a lively study environment where constant use is made of business examples and case studies to help students to develop their knowledge and understanding of key topics and issues. Use is made of visiting speakers and industrial visits (such as to Cadbury World, New York and Alton Towers) to enhance the curriculum. Business students are also offered the opportunity to participate in the 'Student Investor Challenge', where they work in teams to develop a portfolio of investments using a 'virtual' £100,000.

You will study topics such as Finance, Marketing, Operations and Human Resources. Students will sit 3 exam papers, each 2 hours long, in the summer of Year 13.

What are the Entry Requirements?

Route 1: If you have studied GCSE Business Studies

Grade 6 in Business Students GCSE

Grade 6 in either English Language or Mathematics with grade 5 in the other subject.

OR

Route 2: If you have not studied GCSE Business Studies

Grade 6 in English Language

Grade 6 in Mathematics

*Students with Mathematics and English grades slightly below the requirements above will be considered on an individual basis.

After Range Sixth Form, what can I do?

The applied nature of the A level course provides an appropriate foundation for further study of Business Studies or related subjects in higher education. Business-related courses are wide-ranging, from Accountancy to Business Law and from European Marketing to International Relations. Elements of business are also to be found in degree courses including Engineering, Science, Foreign Languages, and Art and Design.



BTEC Business Studies



Why choose Business Studies BTEC at Range Sixth Form?

This course offers you the opportunity to study businesses in a highly practical, work-related manner, as everything you will do is related to 'real-life' business contexts. The Diploma qualification that you will gain is equivalent to two A-Levels. The Extended Certificate is one A Level. You will learn in a largely 'active manner' by completing projects and assignments that are based on realistic workplace situations and activities.

What will I learn?

Our recent and current students have enjoyed visits to New York, Alton Towers, Waitrose and Jaguar Land Rover and talked to visiting speakers from Bosch and Well Red Magazine. Our BTEC students are also offered the opportunity to participate in the 'Student Investor Challenge', where they work in teams to develop a portfolio of investments using a 'virtual' £100,000.

- Students completing the two A level qualification will study 8 units over 2 years, 3 of which are external exams.
- Students completing the one A level qualification will study 4 units over the 2 years, 2 of which are external exams.

What are the Entry Requirements?

For BTEC Business you will need to meet the admissions criteria for Pathway 2.

After Range Sixth Form, what can I do?

This course provides solid and varied business knowledge and is good preparation for a variety of business careers. Students will find themselves prepared to enter a range of professions including financial services, sales and retailing, office administration, accounting, banking, etc.



A Level Economics



Why choose Economics at Range Sixth Form?

Studying Economics helps you to understand many of the big and puzzling questions facing the UK and the world today, such as:

- What can be done to improve the prospects for the UK economy?
- Why is high inflation a problem?
- Should all education and healthcare be provided free of charge?
- Are Premier League footballers overpaid?

What will I learn?

The Economics A level course provides students with a firm and broad understanding of how economies work, how our scarce resources are allocated and how the decisions relating to their allocation affect us all.

In a lively and highly interactive study environment, students will learn about issues that affect the whole economy (macro) and those that affect various aspects of the economy such as businesses or individuals (micro). Within the course students will gain an in-depth understanding of how the laws of supply and demand work, and of the many influences (including governmental ones) upon their interaction. Students approach the subject of economics from both a UK and a global perspective.

What are the Entry Requirements?

Grade 6 in English Language and Mathematics

Students with grades slightly below the above will be considered on an individual basis.

After Range Sixth Form, what can I do?

Higher education courses may focus on Economics or combine it as a significant component with one or more other subjects.

Economics related courses could be as diverse as Transport Management and Economic History.

Mathematical Economics and Econometrics are other options that may be followed.



A Level Psychology



Why choose Psychology at Range Sixth Form?

You will be taught by well-qualified and experienced teachers who are AQA examiners and have a history of leading high-performing departments and successfully supporting students in their career progression. You can expect to be challenged to achieve your potential and supported by regular feedback, enabling you to identify what you are doing well and what will lead to continued improvement as you develop your skills.

What will I learn?

You will have three two-hour written exams at the end of the course, all with a mixture of multiple choice, short answer and extended essay questions.

Paper 1: Introductory Topics
Social Influence
Memory
Attachment
Psychopathology

Paper 2: Psychology in Context
Approaches in Psychology
Biopsychology
Research Methods

Paper 3: Issues and Options in Psychology
Issues and Debates in Psychology
Relationships
Schizophrenia
Forensic Psychology

Psychology is a science and therefore the course is demanding, as you are not only required to develop your knowledge, understanding, application and evaluation of Psychology, but you also have to demonstrate competence in Mathematics. In addition, at least 25-30% of the overall assessment will be linked to Research Methods. A strong background in Biology would be an advantage.

What are the Entry Requirements?

- Grade 6 in Maths and English Language GCSE.
- Students who achieve below this may be considered on an individual basis and Science grades will be a focus.

After Range Sixth Form, what can I do?

Psychology builds on and develops skills in the Sciences, Maths and Humanities and consequently enhances applications in many career pathways.

Students may want to become a psychologist and work in a clinical or forensic setting or may want to become criminologists, working for the police or social services. Many students use Psychology to enter education and train as teachers or the medical profession to become doctors, dentists, vets, physiotherapists, occupational therapists or midwives, to name a few.

With transferable skills, students have also entered fields such as aerospace engineering, law degrees or careers within film, media and business. In short, there is no limit to where psychology can take you in terms of course, career or geographical location.



A Level Criminology



Why choose Criminology at Range Sixth Form?

This A Level equivalent subject encompasses sociology, law, and psychology which opens further opportunities at Higher Education level and in future careers. Gaining an insight into these subjects in relation to crime and the legal system is a great stepping stone for students and allows them to develop their analytical/questioning skills. Students have the opportunity to pick apart topics such as the nature vs. nurture debate, the impact of the media on crime in society, and the roles of those involved in the investigation process.

What will I learn?

- Unit 1: Changing Awareness (Controlled Assessment - 25%).
 - Students will demonstrate an understanding of different types of crime, influences on perceptions of crime, and why some crimes are unreported. Students will prepare notes for their controlled assessment from September to December. The assessment will take place in December and lasts for 8 hours.
- Unit 2: Criminological Theories (External Exam - 25%).
 - Students will gain an understanding of why people commit crimes and theories of criminal behaviour, drawing on what they have learned in Unit 1.
- Unit 3: Crime Scene to Courtroom (Controlled Assessment - 25%).
 - The third unit will provide an understanding of the criminal justice system from the moment a crime has been identified to the verdict. Students will develop the understanding and skills needed to examine information in order to review the justice of verdicts in criminal cases.
- Unit 4: Crime and Punishment (External Exam - 25%).
 - Students will apply their understanding of the awareness of criminality, criminological theories, and the process of bringing an accused to court in order to evaluate the effectiveness of a criminal justice policy.

What are the Entry Requirements?

- Grade 5 in English Language GCSE.

After Range Sixth Form, what can I do?

- A wealth of degree-related subjects
- Apprenticeships
- Employment within the criminal justice system, e.g. the Crime Prosecution Service, the legal sector, the National Probation Service, and the Courts and Tribunals Service.



AAQ Health and Social Care



Why choose HSC at Range Sixth Form?

A Sixth Form qualification in Health and Social Care will introduce you to elements of disciplines like Sociology and Psychology and help you to understand how these, along with the science subjects you have studied before, relate to the fields of healthcare and social care. You will explore the different careers available in these fields and learn about the key values around which good care is built, including a person-centred, holistic approach. Health and Social Care can be taken alongside any A Level subjects and works especially well with any of the humanities subject areas or Biology. Numerous former students of Health and Social Care at Range Sixth Form are now working in NHS careers such as the different branches of nursing, midwifery and occupational therapy.

What will I learn?

- Human Lifespan Development - growth and development through life, interventions and professionals involved
- Human Biology and Health – human body structure and systems, normal physiological functioning and the impact of common disorders
- Health and Social Care Practice – core principles, values and laws that influence health and social care, and the effect of social factors on an individual's health status
- Health, Social Policy and Wellbeing – public health policy and its influences, including health-related organisations/groups and a range of strategic factors

What are the Entry Requirements?

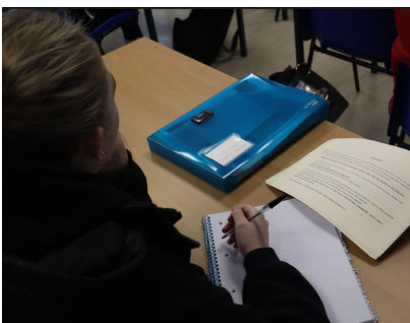
Grade 4 in English Language & 4 further GCSE Grades 9-4

After Range Sixth Form, what can I do?

This qualification helps prepare you for a wide range of degree courses in health care or social sciences, e.g.

- Occupational Therapy
- Physiotherapy (when taken with Biology or P.E.)
- Adult, Children's, Mental Health and Learning Disability Nursing
- Nursing Associate
- Midwifery (when taken with Biology)
- Paramedic Science
- Psychology and Sociology
- Nutrition and Dietetics (when taken with a science subject)

You might also choose an apprenticeship in some of the above subject areas or in social care or dental nursing.



A Level Drama



Why choose Drama at Range Sixth Form?

- Work in a supportive environment where you will be encouraged to achieve your best
- Be able to develop your theoretical and practical skills in a variety of areas
- Have the opportunity to take part in a variety of enrichment activities such as theatre visits, workshops, performing for an audience and working with younger pupils.

What will I learn?

The course will develop practical, creative and communication skills in equal measure. You will extend your ability to create drama and theatre, either in a performing or production role. You will develop your powers of analysis and interpretation to become an informed critic.

The course develops your skills in three main areas:

1. Theoretical: appreciation of live theatre, text analysis, knowledge and understanding of theatrical practitioners, techniques and conventions.
2. Practical: creating original drama and documenting the process; exploring, performing and reflecting upon a variety of texts.
3. Transferable skills: creativity, teamwork, sensitivity, organisation, communication and confidence.

In addition the course will help you develop your personal skills.

What are the Entry Requirements?

To be guaranteed a place on this course, which is available on both Pathway 1 and 2, you need to meet the admissions criteria for Range Sixth Form for your chosen pathway with:

Grade 5 or above in Drama and Grade 5 in English Language.

Please note that due to the practical nature of Drama, students will be considered on an individual basis.

After Range Sixth Form, what can I do?

- Professional playwright
- Theatre lighting technician
- Professional actor
- Degree in Performing Arts
- Musical Theatre Degree
- Primary school teaching.



Extended Project Qualification



Why choose EPQ at Range Sixth Form?

The EPQ is usually taken in Year 12 at Range Sixth Form but it may be taken in Year 13. The EPQ is an additional qualification which requires students to study largely independently but with some support from school. Its main strength is that it helps students to develop the skills needed for Sixth Form and university study. Additionally, it is recognised and valued by universities and sometimes included in university offers.

What will I learn?

Students follow a taught programme that includes both classroom and online learning. The taught programme helps students to develop a range of research and study skills such as completing online research, taking effective notes and writing in academic English. They then use these skills to complete an outcome in the form of a dissertation, report or artefact on their chosen subject.

Each student is allocated a supervisor (staff member) to support him or her through the process. Students also keep a reflective log of their learning and give a presentation of their findings at the end of the process.

What are the Entry Requirements?

Students' suitability will be discussed on an individual basis. A good work ethic is essential.

After Range Sixth Form, what can I do?

- The EPQ enables students to develop and demonstrate independence and initiative. It is welcomed by universities, but it also helps students to gain key employability skills.

