



# RANGE HIGH SCHOOL

CHALLENGE • SUPPORT • FLOURISH



# Welcome to our Y6 Induction Evening!

- Purpose of this evening:
- Welcome you to our/your school;
- to meet staff and students;
- to hear a little about the next few years;
- to hear a little about the curriculum/expectations;
- to have a chance to ask any important questions.



# Who's here tonight?

- Mrs Phillips: Deputy Headteacher: Curriculum/Assessment
- Mr Tees: Assistant Headteacher
- Ms Singleton: Head of Y7: Pastoral/Behaviour
- Mrs Ashworth: Assistant Headteacher: Attendance/transition/expectations
- Mrs McGugan: Assistant Headteacher. Personal Development/Extra-curricular
- Mr Dolly: Senior Deputy Headteacher: Range Ready and ClassCharts
- Mrs Skinner: Head of English/Whole School Literacy
- Mrs Nolan: SENDCO
- Bobby Marshall and Laura Piggott

# The most important people!



# OFSTED

## *Inspection of Range High School*

*Stapleton Road, Formby, Liverpool, Merseyside L37 2YN*

*Inspection dates:*

*22 and 23 March 2022*

### ***Overall effectiveness***

***Good***

*The quality of education*

***Good***

*Behaviour and attitudes*

***Good***

*Personal development*

***Good***

*Leadership and management*

***Good***

*Sixth-form provision*

***Good***

*Previous inspection grade*

*Requires improvement*

# We have more to do:

- More work on Inclusion, support and encouragement for all
- More work on Respect: self and others
- More work on more students getting the best results
- More work on participation, self discipline, character and resilience
- More work on top flight sport: three cup finals, Y8 Athletics City Champions
- More trips/visits: berlin, Ski Trip, London, PGA Trips, Spain, CERN
- More work on Reading
- More work on taking **pride** in your school! All of the Time!





# Challenge, Support, Flourish

- **Challenge** - We push you to do your best in everything you do here, in school subjects, activities and behaviour
- **Support** - We will help you in many different ways to help you do your best
- **Flourish** – Because of how we do things here, we think you do well in your studies, develop your talents and grow into decent, responsible and caring young adults



# Will I do well in my education?

- We achieve consistently excellent exam results at GCSE and A-Level
- The school has, since it opened, had a history of achieving outstanding results:
- GCSE:
  - 2022: 96% of all grades at 4+
  - 76% at least grade 4+ English/Maths
  - Sefton: 64%
  - 38% of all grades: 9-7 (old A\*/A)

90% of all grades this year 9-4



# A-Level Results:



- Over half of all grades awarded A\*/B at A Level
- Nearly a quarter of all grades at A\*/A
- Pass rate: 99.5%
- Overall average grade: 2.2
- BTech: Distinction

90%+ Y13 leavers- first choice destinations  
University/Apprenticeships

# RANGE HIGH SCHOOL

CHALLENGE • SUPPORT • FLOURISH



# **Mrs Phillips: Deputy Headteacher:**

## **Curriculum and Assessment (Mr Tees)**



# Curriculum

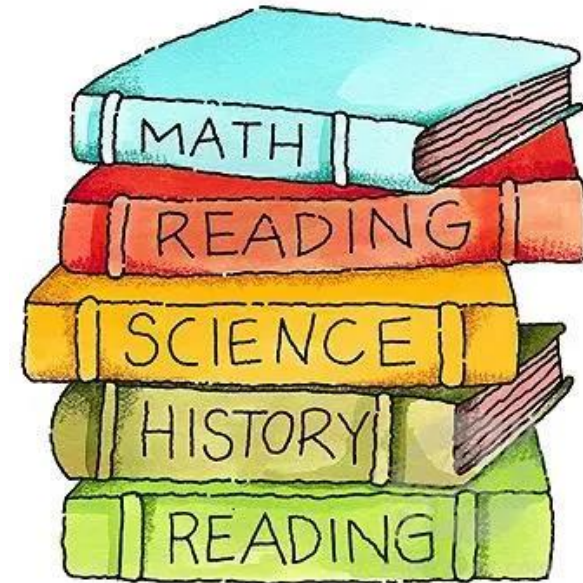
- We are very proud of our curriculum
- We want your child to be excited by their learning
- We offer a **broad** and **balanced** curriculum
- ***Ofsted – ambitious curriculum***





# Curriculum

- **Core subjects** – English, Maths and Science
- Maths is set from the start of Year 7
- English - mixed ability classes
- Science - mixed ability classes until Year 9
- **Additional support** for some pupils in relation to English and Maths
- **Accelerated Reader** programme to support reading – Additional lesson a week
- At key stage 3 your child will experience **16** different subjects!
- (Core subjects **AND** French, Computing, PSHE, Physical Education, Drama, Dance, Art, Music, Food Technology and Design, Technology, History, Geography, RE and Citizenship)



## Mrs Ashworth - Assistant Head teacher



### Areas of responsibility:-

- **Pastoral care** – Head and Assistant Heads of Year
- **Transition** – working with the Primary schools and families to support pupils moving to secondary school
- **Attendance** - Mrs Dillon is our Pupil Support Officer



# The Year 7 Team

## **HOY & AHOY**

Mrs Singleton & Ms McCarthy HOY & AHOY

## **Tutors:**

Mrs Raffo – AR

Mr Linley – DL

Ms Davies – CDA

Mr Jones – SJ

Ms Baskerville – SLB

Ms Duggen - LRD

Mr Hughes - KHU

## **Mentor:**

Mrs Lawrence

TA Team



## Transition

- All pupils welcomed on the transition day – **huge success!**
- Parents' evening tonight – get to know key staff and your child's journey through secondary school.
- Summer Camp – **Monday 24<sup>th</sup> July – Friday 28<sup>th</sup> July.**
- Teaching sets and tutor groups are different.  
Good opportunity to mix and make new friends.  
**Key thing is to try everything on offer!**
- Transition and teambuilding activities will continue from September.

## Ready, Respectful, Safe



## Attendance

- **We want all pupils to attend school regularly.** It is no secret that there is a strong correlation between regular and good attendance and pupil outcomes
- We **aim** for a pupil to have **100% attendance**
- Medical appointments – outside of school hours, whenever possible
- Absence procedures – letter to explain absence, in advance or call the absence line on the first day of the absence
- **Medical certification if there are more complex issues.**
- **Wellbeing visits.**

## Uniform

- We expect all pupils to arrive to School being '**Range Ready**'.
- Expectations are on the website and in the transition information pack.
- **No trainers!**





# UNIFORM EXPECTATIONS OPTION 1

**BEFORE YOU ENTER THE SCHOOL YOU ARE EXPECTED TO:**

- HAVE YOUR COAT OFF
- BE IN THE FULL UNIFORM WORN CORRECTLY
- PHONES SWITCHED OFF AND AWAY

BLAZER ON AT ALL TIMES - THEY CAN BE TAKEN OFF IN LESSON ONLY IF ADVISED BY THE TEACHER

TOP BUTTON TO BE FASTENED AND TIE THE KNOT RIGHT UP TO THE BUTTON

SHIRTS TUCKED IN

BOTTOM OF YOUR TIE MUST TOUCH THE TOP OF YOUR TROUSERS

SMART SHOES MUST BE WORN, SEE EXAMPLES BELOW:



FOOTWEAR SUCH AS TRAINERS OR SPORT SHOES ARE NOT APPROPRIATE SCHOOL ATTIRE AND MUST NOT BE WORN





## UNIFORM EXPECTATIONS OPTION 2

**BEFORE YOU ENTER THE SCHOOL YOU ARE EXPECTED TO:**

- HAVE YOUR COAT OFF
- BE IN THE FULL UNIFORM WORN CORRECTLY
- PHONES SWITCHED OFF AND AWAY

BLAZER ON AT ALL TIMES - THEY CAN BE TAKEN OFF IN LESSON ONLY IF ADVISED BY THE TEACHER

TOP BUTTON TO BE FASTENED AND TIE THE KNOT RIGHT UP TO THE BUTTON

BOTTOM OF YOUR TIE MUST TOUCH THE TOP OF YOUR SKIRT

SHIRTS TUCKED IN



SMART SHOES MUST BE WORN, SEE EXAMPLES BELOW:



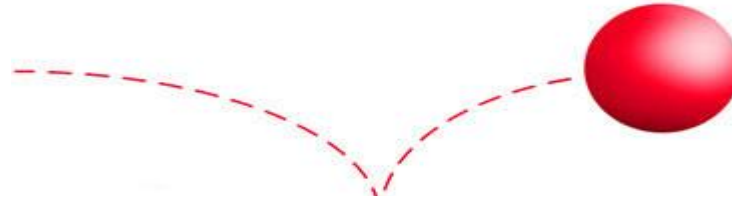
FOOTWEAR SUCH AS TRAINERS OR SPORT SHOES ARE NOT APPROPRIATE SCHOOL ATTIRE AND MUST NOT BE WORN

# Personal Development at Range

We aim to produce the adults of the future: equipped to be resilient, confident and independent to embrace challenges and contribute positively to society.



*Resilience*



# Some examples of external organisations that pupils have been involved with in 2022/23





## Example of Range High School Extracurricular Activities



	Monday	Tuesday	Wednesday	Thursday	Friday
Lunchtime	KS4 and 5 Art Club (R50)  Y9 Dot Art (R50) GCSE DT (R42) A Level Product Design (R42) GCSE German Drop-in (R18)	GCSE Food (R7)  Puzzle Club (All Years) Choir (R54) GCSE DT (R42) A Level Product Design (R42) KS4 and 5 Art Club (R50)	GCSE Food (R7)  Choir (R54) KS4 and 5 Art Club (R50) KS4 and 5 School Podcast (R52) GCSE DT (R42) A Level Product Design (R42) KS3 Art Club (R50) GCSE German Drop-in (R18)	Keyboard Club 12.40 (R54) Year 7 and 8 Drama club (Arts Theatre) Anime Club (Room 35 12.30) KS3 Archaeology Club (R30) GCSE DT (R42) A Level Product Design (R42) KS4 and 5 Art Club (R50) GCSE German Drop-in (R18)	Inclusion Club (R62)  KS4 and 5 Art Club (R50) Y9 Dot Art (R50) Sefton Super Reads (Library) GCSE DT (R42) A Level Product Design (R42) GCSE German Drop-in (R18)
	PE Department				
	GCSE Dance (LGA) 7-9 Basketball (LR) Paper 2 GCSE PE (AS)	GCSE Dance (LGA) 7-11 Table Tennis (AS) 7, 8 & 9 Dodgeball (KS) 7, 8 & 9 Fitness (AO)	GCSE Dance (LGA) 8 Indoor Football (IC)	GCSE Dance (LGA) 7-11 Badminton (KS) Paper 1 GCSE PE (AO)	7, 8 & 9 Volleyball (LR) 10 & 11 Fitness (AO)
After School	KS4 and 5 Art Club (R50)  Orchestra 3.20 to 4pm (R54)	CAM Nat Child Development (until Christmas) (TR)  KS4 and 5 Art Club (R50) A Level Product Design (R42) GCSE DT (R42)		KS4 Drama (Arts Theatre) Environment Club (Spring term onwards) KS4 and 5 Art Club (R50) A Level Product Design (R42) GCSE DT (R42)	
	PE Department				
	7 & 8 Netball (AS/KS/LGA) 7 Rugby (IC) 10 & 11 Football (AO)	7 & 8 Badminton (PZM/ KS) 9, 10 & 11 Dance (LGA) 7-9 Football (AO/ LR/ IC) 7-11 Football (AS)	7-11 Running Club (CB)	9, 10 & 11 Netball (GP) 7 & 8 Dance (LGA) 8 Rugby (IC) 7-11 Basketball (AO/LR)	



**Cultural Capital** is defined as *'the essential knowledge that pupils need to be educated citizens, introducing them to the best that has been thought and said, and helping to engender an appreciation of human creativity and achievement'*.

*Range provides numerous opportunities for pupils to increase their cultural capital.*



## Trips and other activities outside the classroom in 2022/23

Iceland fieldtrip – Geography

Berlin – History

Italy – Ski trip

Geneva – CERN Physics

Spain – Spanish

London – History and Art trips

PGL – Year 8 and 9 Pastoral trips

Theatre Trips – Blood Brothers, Panto, Lion King

Alton Towers – Business

UN mock Conference with Citizenship









# Mr Dolly: Senior Deputy Headteacher: Range Ready and ClassCharts







# Behaviour for Learning

Adults in the school will use these 3 simple expectations

## **RANGE**

- ✓ **READY**
- ✓ **RESPECTFUL**
- ✓ **SAFE**



## READY

- ✓ RIGHT TIME
- ✓ RIGHT EQUIPMENT
- ✓ RIGHT UNIFORM

- ✓ Sixty minutes of learning each lesson.
- ✓ We expect to start lessons promptly on the bell.
- ✓ **RANGE READY** every lesson...

# 3 Merits every lesson!



Range Ready

Your Form Tutor will award everyone in the class 3 merits at the start of morning registration.

You will lose 1 merit each for :

Not being in the correct uniform, correctly worn.

Not being on time.

Not having your correct equipment:

*Pen, Pencil, Ruler.*



Range Ready

You will also be given 3 merits at the start of each lesson. This means that by being in school, working well, being equipped and on time, you will receive **18 merits each day.**

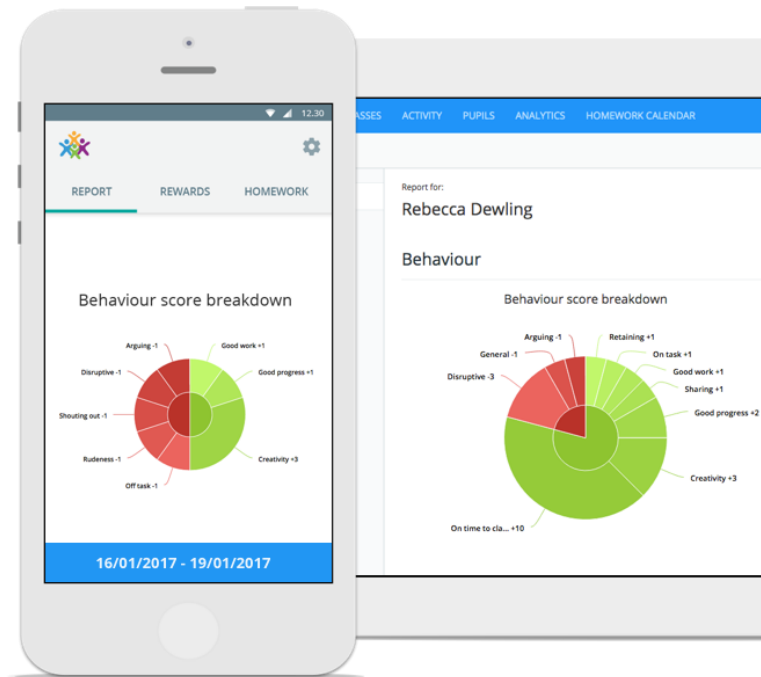




# ClassCharts

Attendance, Behaviour, Rewards, Timetables, Announcements





Students are given log-in details for themselves and their parent/carers. You can each download a student and a parent app for instant access to your behaviour points, homework and attendance.

# Behaviour

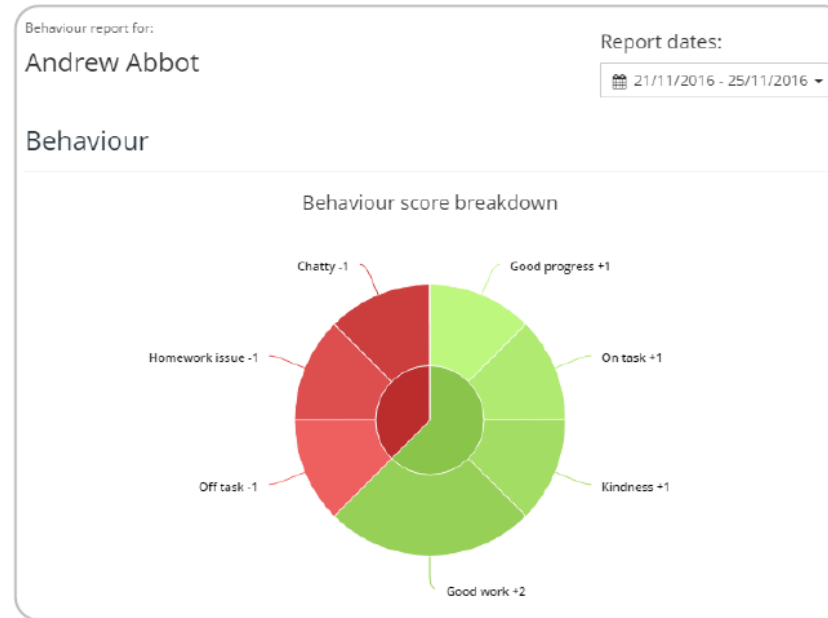
## Behaviour breakdown

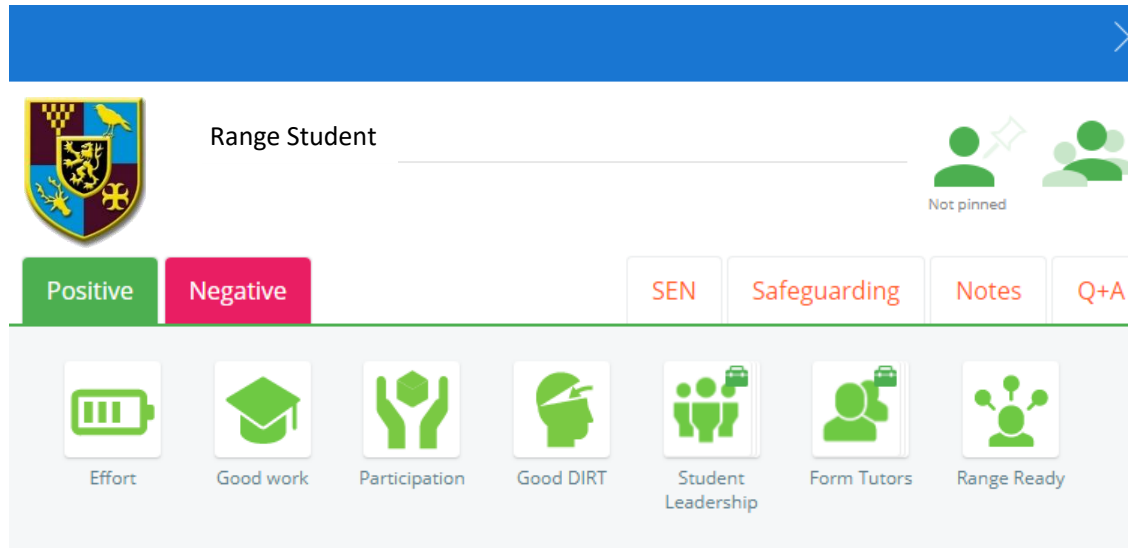
On the behaviour screen you will be presented with graphs which display your overall behaviour in the form of a pie chart and a bar graph.

To change the date range of displayed data, simply click on the [calendar icon](#).

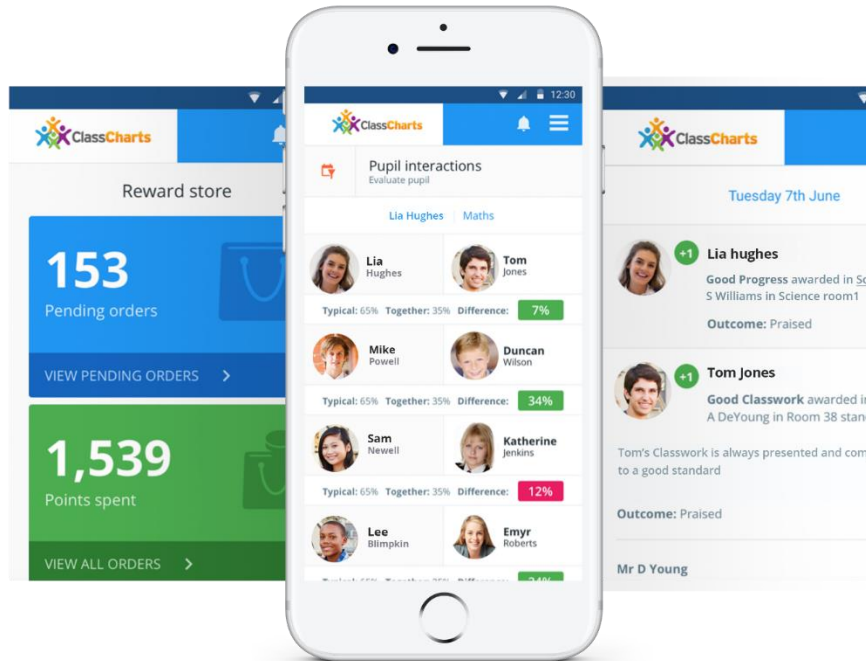


Parental support  
/ checking  
makes a huge  
difference!





Teachers will use class charts to log all behaviour. We want to catch you doing well not badly. We want to award merits!



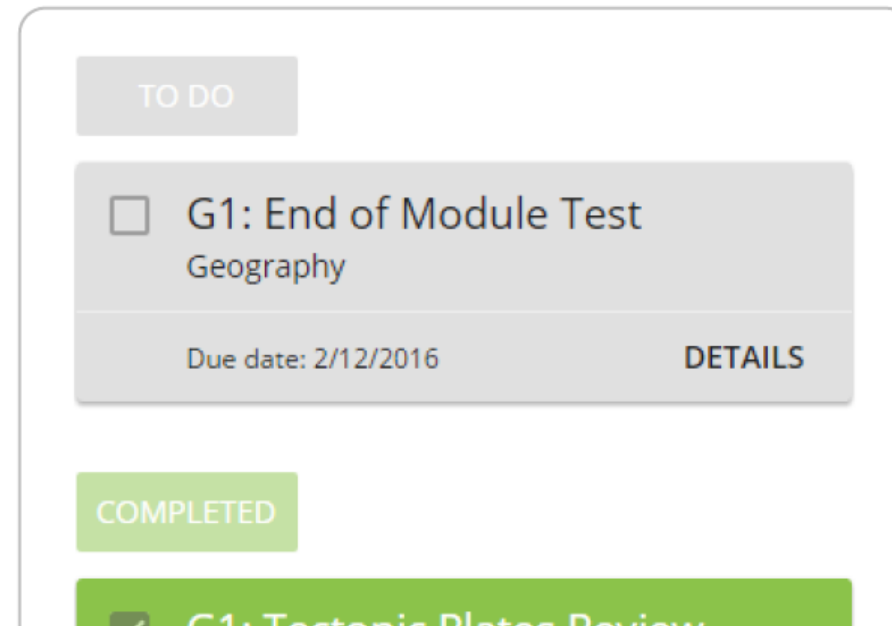
We also have an online reward shop. Students will be able to redeem positive merit points for items in the shop.

# Homework

ALL homework is set on Class Charts.

It is student's responsibility to check and complete homework using Class Charts.

Homework tasks fall under 3 different categories: [to do](#), [pending](#) and [submitted](#).





Parental support  
/ checking  
makes a huge  
difference!

# Two of our Y7 Students:



- **Bobby Marshall**
- **Laura Piggott**



# Most of the information is in your booklet or on the website:

- **Website:**

**[www.range.sefton.sch.uk](http://www.range.sefton.sch.uk)**



# **Thank you for visiting Range High School**

## **Thank you for coming to our Induction Evening 2023**



**Mike McGarry  
Headteacher**