



Range High School

Alumni Newsletter - Oct 2018

Dear former pupils and staff,

As this is the first newsletter for the newly formed Range High School Alumni Association, I thought I would bring you all up to date with how the school has progressed since its opening in 1975 regarding teachers, the school building, uniform and the House system.



Mrs M Miller, Mr M Dixon, Mr E Storey (First Chair of Governors) Mr G Leech and Ms J Wright

Range High School opened in 1975 with 165 pupils, 10 teaching staff and 5 support staff. Graham Leech, Range's first Head teacher 1975-1992. Mike Dixon took over after Graham's retirement from 1992-2003. Janet Wright, one of the original staff that started in 1975 as Head of English went on to be Deputy Head and then Acting Head until her retirement in 2004. Mo Miller was appointed as the fourth Head teacher and remained in post until her retirement in 2009.

Our current Head teacher, Graham Aldridge, came to Range as Deputy Head and took over from Mo in 2009.





For those of you who were at Range in the 1970s, 80s and 90s you would see many changes to the school building now.

The school used to be all on one level but now the 6th Form building and the 'new building' at the rear of the school both have a second floor.

A large extension was added in 2010 which created a spacious new reception area and a large IT classroom. The examination office now sits on the site of the original reception area.



Main entrance c1975



Today



The main reception.



The Examinations Office built on the site of the original reception area



English & Humanities



In 2006, at the rear of the school, another new building was added.

The building which houses the English and Humanities Departments has four offices and twelve classrooms. It sits on the site of the original tennis courts.

Entrance to the building is through the 'Anne Webb Way' situated between Languages and the DT departments. The walkway was dedicated to our former Head of English who very sadly passed away in August 2009.



Multi Use Games Area or 'MUGA' as it is called is now at the back of the new building.

**Range High School
has also grown in
numbers over the
years and now
has around 1300
pupils and 134 teaching
& support staff.**



Sixth Form Centre

In 2003 a dedicated Sixth Form centre was built.

Downstairs there is a classroom and a large open plan common room with computer access and vending machines, together with office space for staff. Upstairs is a large study area with computer access and three classrooms.



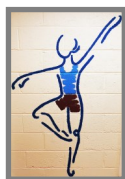


Dining Room

The 'cashless' dining room has increased in size and is more colourful. With two areas, one for hot food and sandwiches and the other a 'café' style kiosk for salads and cakes.



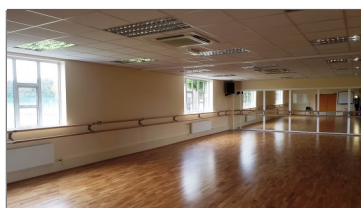
Dance Studio



This summer has seen the addition of another dedicated space. Classrooms 12 and 13, behind the Sports Hall, were merged to provide a fantastic dance studio. Named after Gill Burns, in recognition of her service to school and sport.



The
Gill Burns
Dance Studio





Uniform



The school uniform has changed slightly over the years, with a new but similar tie for Y7-9 and a more adult tie for Y10-11. The blazer has changed from black to dark navy blue which looks incredibly smart with the blue shirt. The PE kits have had more changes but still keep to the House colours.

The House System

The House System is still exactly the same as when Graham Leech introduced it in 1975. Each house has a Head of House, and Assistant Head of House and 12 tutors. The House System has been mentioned in all 5 OFSTEDs as a 'major strength of the school'.

Blundell

Derby

Sefton

Weld

Staffing changes

There have been many staff changes over the years and it would be impossible to give you news of all of them, but I will mention 4 members of staff that have retired this year.

Beryl Drury

Beryl retired this year after 26 years at Range. She came as an R.E. and History teacher and was appointed Head of R.E. on the retirement of Jenny Mathias. Beryl inspired many of her pupils with her love of the subject.



We hope she has a long, healthy and happy retirement.



Gill Burns

Gill joined Range in 1995 to teach P.E. She represented England at Rugby and was incredibly inspirational to many of our sporty girls and boys. Gill became Assistant Head of Weld House, a post she excelled at and was later appointed as Head of Derby House. She always had time for those in her care. She has retired after 23 years at the school and we hope she has a long, happy and healthy retirement.



George Orchard

George joined the staff at Range in 1980 as Head of Mathematics. He also took groups on D of E, led many school holidays to various European countries, was the School's Examinations Officer, created the school timetable for many years and was an important member of the Senior Leadership Team. He was an Assistant Head teacher and Acting Deputy Head teacher. One of his major strengths was his ability in teaching Mathematics and Further Mathematics. He inspired many pupils to love the subject as he did and many owe him a great debt for the extra time and support he gave them. George retired this year after 38 years of teaching at the school and we wish him a long, happy and healthy retirement.

Debbie Breen

Debbie was appointed as a teacher of Mathematics in 1994 and has retired this year after 24 years at Range. Debbie loved teaching her subject and inspired many others to enjoy it too. She became Head of Mathematics a number of years later but stepped down to part time a couple of years ago in preparation for her retirement. We wish her a long, happy and healthy one.



Proms at Range

The school prom was first introduced in 1988 and has been the highlight of the year for those students in Y11 ever since.



Students celebrating at the 1988 Prom



30 Years later the 2018 Prom

Flashback Fridays

Join us on Facebook for Flashback Fridays. Tutor groups, school holidays, prom photos. Or send in your own to

alumni@range.sefton.sch.uk



CLASS OF 94



Reunions

This year we had reunions for the classes of 1994 and 2004.

It was lovely to see those of you who could make it. Please look out on the Alumni Facebook page



Upcoming Reunions

There will be two reunions next summer. They will take place in June/July 2019. One will be for those pupils who started Range in 1975-1980, i.e. the first six years through the school. The second will be for those pupils who started in Range in 1981-1986. More information will be posted soon on the school website and the alumni Facebook page.

The Alumni

The Alumni Association has been set up to give former pupils opportunities to meet up/ be in contact with former school friends and staff that they may not have seen for some time. Reunions will be organised in school and there will be an opportunity for former pupils to visit the school and see the changes for themselves.

Former staff and pupils can register to join the Range High School Alumni Association on the school website (www.range.sefton.sch.uk) through 'School Life' tab and also access the Alumni Facebook page.

Thank you for registering with us and a special thanks to those of you who have been in touch with school to offer support and advice to our Sixth Form pupils in their chosen A level subjects and future university courses.

Association

As this is the first newsletter, I have informed you of many changes to the school since it opened in 1975. Further newsletters will address news of current school events and alumni information. Thank you for your support and interest in our school.

Judy Lowe

Alumni Officer